



STRONGLINK
FUTURE READY TECHNOLOGY

2021 Product Guide



STRONGLINK
FUTURE READY TECHNOLOGY

2021 CONTENTS

COPPER SOLUTIONS

CATEGORY 6A	3
CATEGORY 6	5
MINDERS	7
VOICE	8
POWER DISTRIBUTION	8
TOOLS/ HOOK & LOOP	9

FIBRE OPTIC SOLUTIONS

PATCHCORDS SINGLE MODE - MULTI MODE	11
PIGTAILS SINGLE MODE - MULTI MODE	12
ADAPTORS/ COUPLERS	13
FIBRE ADAPTOR PANELS AND SPLICING ACCESSORIES	14
FOBOT'S SLIDING 1U	15
FOBOT WALL BOXES	16
FOBOT PLASTIC BOXES	17
FOBOT DIN BOXES	18
TOOLS, CLEANER, TESTER & ACCESSORIES	19
FUSION SPLICER & CLEAVER	20
FOBOT DOME CLOSURE	21
FIBRE CABLE	22

CATEGORY 6A



NATA TEST LAB ACCREDITED AS/CA 5008

CABLE

Stronglink's Category 6A F/UTP cable is at the leading edge of copper network speed and performance. Designed to support 10GBase-T networks, our LSZH sheathed cable is designed with four star-separaed unshielded twisted pairs and drain wire encased with one outer foil/ screen enabling Alien Cross-Talk (AXT) and Electro Magnetic Interference (EMI) mitigation. This Cat6A cabling platform provides the dual benefit of being a screened cable but with only one foil to manage whilst delivering the same technical outcome. Stronglink Cat6A cable comes on a 500m reel and is fully compliant with ISO11801 / AS3080 / S008 requirements providing surety of safety, performance and support.

PART NUMBER	DESCRIPTION	SPECIFICATIONS	LENGTH	UNIT	PACKAGING	COLOUR
STKCAT6A500	CAT6A F/UTP LSZH Cable	ISO:11801/AS3080 , S008,ROHS,UL,23 AWG	500	Metre	Roll	Violet

JACKS

Stronglink Category 6A shielded field outlets offer superior performance and protection against the potential effects of ANEXT and EMI. An essential element of Stronglink's Cat6A F/UTP solution, these outlets offer rear or side entry termination and are readily interoperable with industry standard Clipsal® and HPM® wallplates without the need for bezel interfaces. Designed as a toolless termination, there are no vendor-proprietary tools required to be purchased thereby reducing project and contractor costs on projects and improving both time and ease of install. The toolless termination ensures an evenness of pressure across all pairs on termination thereby delivering improved performance. Offering the mechanical protection of a dust cap on the face of the jack, these outlets comply with project / site specifications requiring the jack to have a physical barrier protecting the outlet from ingress.



PART NUMBER	DESCRIPTION	SPECIFICATIONS	UNIT	PACKAGING	COLOUR
STKJC6A	CAT6A FTP Toolless RJ45 Jack, 568A - rear entry	ISO:11801/AS3080, S008,ROHS,UL	1	Hang Sell, Bags of 10	Metal
STKJC6ASE	CAT6A FTP Toolless RJ45 Jack, 568A - side entry	ISO:11801/AS3080, S008,ROHS,UL	1	Hang Sell, Bags of 10	Metal
STKJC6AK	CAT6A FTP Keystone Toolless RJ45 Jack, 568A	ISO:11801/AS3080, S008,ROHS,UL	1	Hang Sell, Bags of 10	Metal

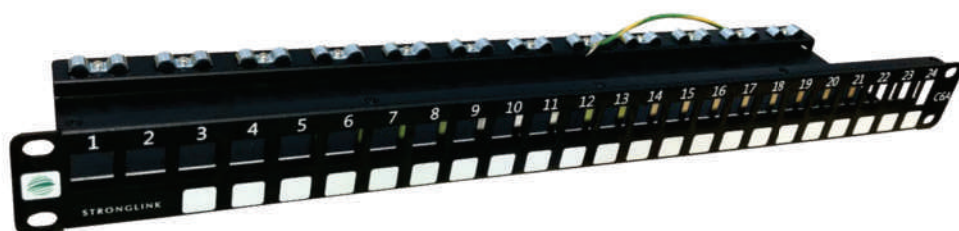
PATCH CORDS

Stronglink Category 6A shielded patch cords have been designed to deliver channel network performance across 10GBase-T applications. Stronglink patch cords effectively interoperate with all industry standards compliant RJ45 outlet products irrespective of manufacturer. Our patch cords are factory terminated and offer anti-snag boots and a slimline footprint making cord management easier in both the rack and field environments. Available in a range of lengths, Stronglink Cat6A patch cords deliver a high performance channel solution.



NATA TEST LAB ACCREDITED AS/CA 5008

PART NUMBER	DESCRIPTION	SPECIFICATIONS	LENGTH	UNIT	PACKAGING	COLOUR
STKPLC6A05	4pr F/UTP LSZH, RJ45	ISO:11801/AS3080, S008,ROHS,UL	0.5	Metre	Hang Sell	Blue
STKPLC6A1	4pr F/UTP LSZH, RJ45	ISO:11801/AS3080, S008,ROHS,UL	1	Metre	Hang Sell	Blue
STKPLC6A2	4pr F/UTP LSZH, RJ45	ISO:11801/AS3080, S008,ROHS,UL	2	Metre	Hang Sell	Blue
STKPLC6A3	4pr F/UTP LSZH, RJ45	ISO:11801/AS3080, S008,ROHS,UL	3	Metre	Hang Sell	Blue
STKPLC6A5	4pr F/UTP LSZH, RJ45	ISO:11801/AS3080, S008,ROHS,UL	5	Metre	Hang Sell	Blue



PATCH PANELS

The Stronglink Category 6A unloaded patch panel is a key component of our Cat6A F/UTP solution. The 24 port 1RU panel offers rugged steel construction and a metal strain relief bar enabling effective cable support and management. Accepting our industry Keystone RJ45 shielded outlets, the panel may be loaded as outlets are terminated offering ease of install.

PART NUMBER	DESCRIPTION	UNIT	PACKAGING	COLOUR
STKPPC6A24	24 Port 1RU STP Unloaded Patch Panel with Rear Minder	Each	Cardboard Box	Black

MODULAR PLUG

The Stronglink Cat6A modular plug exceeds all the requirements for ISO/IEC 11801/AS/NZS3080 Class EA. This plug is simple to terminate in the field and its toolless construction means no special tools are required to terminate it. Included with the plug is a right angle guide allowing you to route the cable out the top, bottom, left or right of the plug when terminating for use in those tight areas.



PART NUMBER	DESCRIPTION	SPECIFICATIONS	UNIT	COLOUR
STKMC6APLUG	RJ45 Cat6A Shielded Plug, Field Terminable - Toolless	ISO/IEC 118001/AS/NZS 3080, ANSI/TIA-568C.2	Each	Metal

CATEGORY 6



**NATA TEST LAB
ACCREDITED AS/CA 5008**

CABLE

Stronglink Cat6 4 Pair UTP PVC cable has been designed to support high speed data transmission systems such as Gigabit Ethernet. The cable comes in a 305m reel in a box and is part of our Category 6 range of products that are designed to comply with global Category 6 Class E specifications. Our cabling products are fully compliant with ISO11801 / AS3080 / 5008 requirements which provides surety of safety, performance and support.

PART NUMBER	DESCRIPTION	SPECIFICATIONS	LENGTH	UNIT	PACKAGING	COLOUR
STKCAT64BL	CAT6 4PR UTP Cable	ISO:11801/AS3080,5008,ROHS,UL,23 AWG	305	Metre	Reel in a Box	Blue
STKCAT64GN	CAT6 4PR UTP Cable	ISO:11801/AS3080,5008,ROHS,UL,23 AWG	305	Metre	Reel in a Box	Green
STKCAT64GY	CAT6 4PR UTP Cable	ISO:11801/AS3080,5008,ROHS,UL,23 AWG	305	Metre	Reel in a Box	Grey
STKCAT64RD	CAT6 4PR UTP Cable	ISO:11801/AS3080,5008,ROHS,UL,23 AWG	305	Metre	Reel in a Box	Red
STKCAT64YL	CAT6 4PR UTP Cable	ISO:11801/AS3080,5008,ROHS,UL,23 AWG	305	Metre	Reel in a Box	Yellow



JACKS

Stronglink Category 6 field outlets are able to be terminated using industry standard 110-style tools. Dual colour coded to enable rear or side entry 568A/B terminations, Stronglink Cat6 field outlets are engineered to directly integrate with industry standard wallplate products such as Clipsal® and HPM® without the need for bezel interfaces.

PART NUMBER	DESCRIPTION	UNIT	PACKAGING	COLOUR
STKJC6KWH	RJ45 Keystone Jack, 568A	1	Hang Sell in bags of 10	White
STKJC6WH	RJ45 FMK Jack, 568A	1	Hang Sell in bags of 10	White
STKJC6WH50	RJ45 FMK Jack, 568A	1	Bucket of 50	White
STKKSBSHWH	Shuttered Keystone Bezel White	1	Hang Sell in bags of 10	White

PATCH CORDS

Stronglink Category 6 UTP patch cords have been designed to deliver channel network performance across 10/100Base-T and 1000Base-T applications. Available in a wide range of lengths and colours, Stronglink patch cords effectively interoperate with all industry standards compliant RJ45 outlet products irrespective of manufacturer. Our patch cords are factory terminated and offer anti-snag boots and a slimline footprint making cord management easier in both the rack and field environments. Available in Blue, Red, Yellow, Green, White and Black



PART NUMBER	DESCRIPTION	LENGTH	UNIT	COLOUR
STKPLC605xx	Stranded 4pr UTP, RJ45 with Snagless Plugs	0.5	Metre	<div>BLUE-BL</div> <div>RED-RD</div> <div>YELLOW-YL</div> <div>GREEN-GN</div> <div>WHITE-WH</div> <div>BLACK-BK</div>
STKPLC61xx	Stranded 4pr UTP, RJ45 with Snagless Plugs	1	Metre	
STKPLC61.5xx	Stranded 4pr UTP, RJ45 with Snagless Plugs	1.5	Metre	
STKPLC62xx	Stranded 4pr UTP, RJ45 with Snagless Plugs	2	Metre	
STKPLC63xx	Stranded 4pr UTP, RJ45 with Snagless Plugs	3	Metre	
STKPLC65xx	Stranded 4pr UTP, RJ45 with Snagless Plugs	5	Metre	
STKPLC610xx	Stranded 4pr UTP, RJ45 with Snagless Plugs	10	Metre	
STKPLC615xx	Stranded 4pr UTP, RJ45 with Snagless Plugs	15	Metre	
STKPLC620xx	Stranded 4pr UTP, RJ45 with Snagless Plugs	20	Metre	

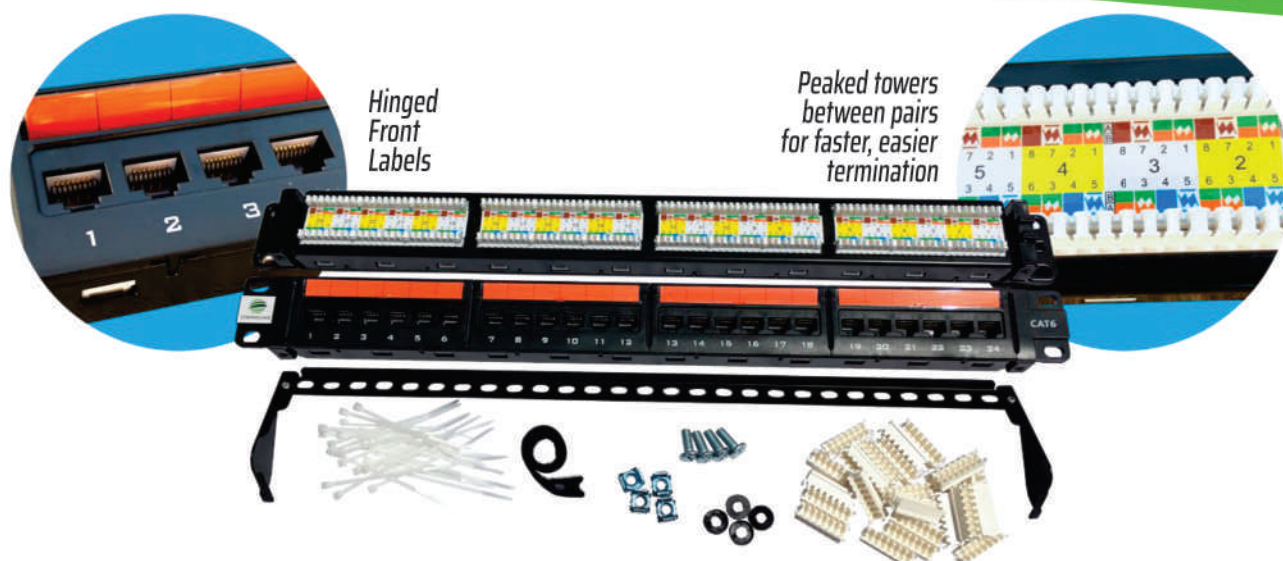
* For preferred colour replace 'xx' with the following: BL, RD, YL, GN, WH, BK

ULTRA THIN PATCH CORDS

Stronglink Category 6 ultra thin patch cords are made to the same exacting standards of our regular patch cords, whilst allowing higher density patching and less clutter at distribution points. Available in Green and Blue.



PART NUMBER	DESCRIPTION	LENGTH	UNIT	COLOUR
STKPLC6UT03xx	UltraThin 4pr UTP, RJ45 with Snagless plugs	0.3	Metre	<div>BLUE-BL</div> <div>GREEN-GN</div>
STKPLC6UT05xx	UltraThin 4pr UTP, RJ45 with Snagless plugs	0.5	Metre	
STKPLC6UT1xx	UltraThin 4pr UTP, RJ45 with Snagless plugs	1	Metre	
STKPLC6UT15xx	UltraThin 4pr UTP, RJ45 with Snagless plugs	1.5	Metre	
STKPLC6UT2xx	UltraThin 4pr UTP, RJ45 with Snagless plugs	2	Metre	
STKPLC6UT3xx	UltraThin 4pr UTP, RJ45 with Snagless plugs	3	Metre	
STKPLC6UT5xx	UltraThin 4pr UTP, RJ45 with Snagless plugs	5	Metre	



PATCH PANELS

Stronglink Category 6 24 port 1RU loaded Patch Panels are a centre-of-network termination solution offering a 4 pair IDC environment which may be terminated using industry standard 110-style or Krone-style tooling. Our panels offer an innovative, fully customisable, centrally hinged labelling capability delivering ease of port identification to end users and contractors alike. The IDC towers are peaked enabling ease of pair distribution when dressing cables for termination. A handy strain relief bar at the rear of the panel provides cable support and capability to effectively marshall cables upon entry to the termination point. Stronglink Category 6 patch panels are an essential element in the delivery of high performance Category 6 link and channel gigabit ethernet applications. Stronglink Cat6 patch panels include outlets that are of industry Keystone footprint.

PART NUMBER	DESCRIPTION	SPECIFICATIONS	UNIT	PACKAGING	COLOUR
STKPPC624	24 Port 1RU Patch Panel with Rear Minder and hinged labels.	ISO:11801/AS3080	Each	Hang Sell	Black
STKPPUL24	24 Port 1RU Unloaded Patch Panel with Rear Minder		Each	Cardboard	Black



STKPCMI



STKPCMSLOTTED

MINDERS

PART NUMBER	DESCRIPTION	UNIT	PACKAGING	COLOUR
STKPCMI	5 Ring Cable Manager - 1RU Steel	Each	Box	Black
STKPCMSLOTTED	Slotted Cable Manager with cover - 1RU ABS/Plastic	Each	Box	Black

VOICE

BACK MOUNT FRAMES

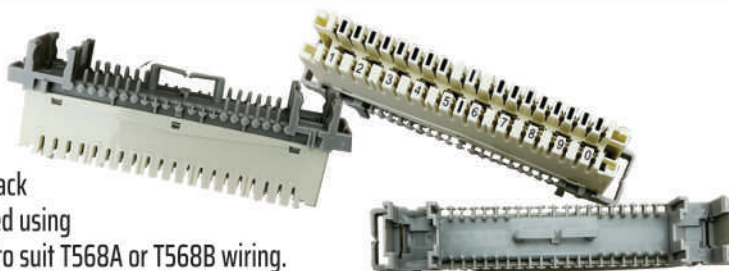
Stronglink back mount frames are ideal for internal use as a campus distributor or floor distributor. 11 or 27 way modules available. Jumperable frames. Frame & cover sold separately.



PART NUMBER	DESCRIPTION	UNIT	PACKAGING
STKBMF11	Back mount frame 11 position	Each	Loose
STKBMF27	Back mount frame 27 position	Each	Loose
STKBMFC11	Back mount frame cover 11 position	Each	Cardboard
STKBMFC27	Back mount frame cover 27 position	Each	Cardboard

VOICE CONNECTION MODULES

Stronglink's voice connection modules are suitable for both back mount and profile frames. The cable joiners can be terminated using either a Krone or 110 style impact tool and can be configured to suit T568A or T568B wiring.



PART NUMBER	DESCRIPTION	UNIT	PACKAGING
STKVCMI0	Voice connection module	10 pair	Loose/Box 10

POWER DISTRIBUTION

POWER DISTRIBUTION UNITS

Stronglink stocks common PDU configurations for all your rack power needs. All are tested & certified to exceed Australian Standards. PDU come complete with rack mounting hardware & 1.8m power cord.

PART NUMBER	DESCRIPTION	UNIT	PACKAGING	COLOUR
STKPDUAUS1008SH	PDU AUSGPO 8 Way Horizontal Overload Protected	Each	Box	Black

Other combinations of outlet numbers, vertical mount, surge protected and IEC C13 outlet PDU available, call for details.



TOOLS / HOOK & LOOP



PDTKRD



PDTKR

TOOLS

PART NUMBER	DESCRIPTION	UNIT	COLOUR
STKUJS	Universal Cable Stripper	Each	Grey
STKPDTKR	Krone Style Punch Down Tool	Each	Ivory
STKPDTKRD	110 Punch Down Tool	Each	Orange



HOOK AND LOOP

PART NUMBER	DESCRIPTION	UNIT	COLOUR
STKVELCROCR12X25	Velcro Cable Tie 12mm x 25m Continious Roll	Each	Black
STKVELCROCR19X25	Velcro Cable Tie 19mm x 25m Continious Roll	Each	Black



STRONGLINK
FUTURE READY TECHNOLOGY

FIBRE OPTIC

PATCHCORDS

SINGLE MODE



OS2 9/125µm

Stronglink Single Mode Patchleads have been designed to meet exacting market standards, 100% factory tested and supplied with test results, our patch leads meet and exceed AS/NZS3080 and ISO/IEC11801. All leads are made with LSZH jackets to ensure suitability for even the most stringent Data Centre and telecommunication specification. Stocked in yellow jacket with blue connectors for UPC, and green connectors for APC applications, other colours are available on request.

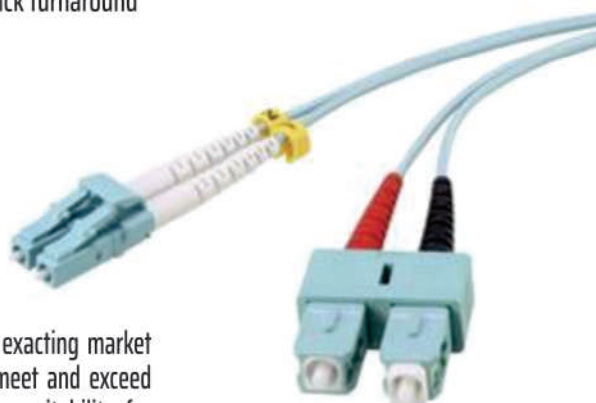
PART NUMBER	DESCRIPTION	POLISH	UNIT	PACKAGING	COLOUR
STKFLCLC0S2DYEx	LC-LC Singlemode OS2 Dpx Lead LSZH	PC	Each	Hang Sell	Yellow
STKFLCSC0S2DYEx	LC-SC Singlemode OS2 Dpx Lead LSZH	PC	Each	Hang Sell	Yellow
STKFSCSC0S2DYEx	SC-SC Singlemode OS2 Dpx Lead LSZH	PC	Each	Hang Sell	Yellow
STKFLCALCA0S2Dx	LCA-LCA Singlemode OS2 Dpx Lead LSZH	APC	Each	Hang Sell	Yellow
STKFLCSCA0S2Dx	LC-SCA Singlemode OS2 Dpx Lead LSZH	PC/APC	Each	Hang Sell	Yellow
STKFSCASCA0S2Dx	SCA-SCA Singlemode OS2 Dpx Lead LSZH	APC	Each	Hang Sell	Yellow
STKFSCSCA0S2Dx	SC-SCA Singlemode OS2 Dpx Lead LSZH	PC/APC	Each	Hang Sell	Yellow

x = Length Standard Lengths are 1, 2, 3, 5, 10mts. Other lengths are available on request
Standard colour jacket is yellow, however other colours are available with quick turnaround

MULTI MODE

OM4 50/125µm

Stronglink Laser Optimized Multimode Patchleads have been designed to meet exacting market standards, 100% factory tested and supplied with test results, our patch leads meet and exceed AS/NZS3080 and ISO/IEC11801. All leads are made with LSZH jackets to ensure suitability for even the most stringent Data Centre specification. Stocked in OM4 50/125µm fibre in an aqua jacket with aqua connectors, other colours are available on request.

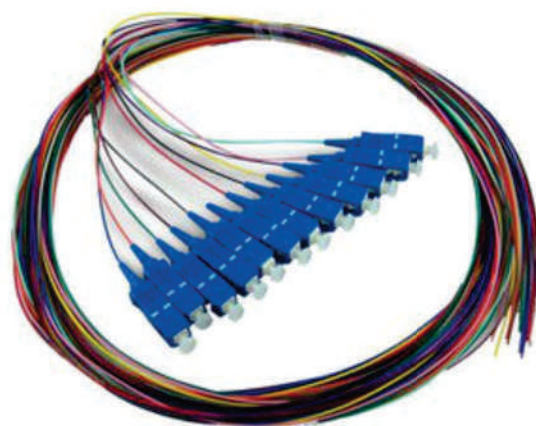


PART NUMBER	DESCRIPTION	POLISH	UNIT	PACKAGING	COLOUR
STKFLCLCOM4DAQx	LC-LC Multimode OM4 Dpx Lead LSZH	PC	Each	Hang Sell	Aqua
STKFLCSCOM4DAQx	LC-SC Multimode OM4 Dpx Lead LSZH	PC	Each	Hang Sell	Aqua
STKFSCSCOM4DAQx	SC-SC Multimode OM4 Dpx Lead LSZH	PC	Each	Hang Sell	Aqua

x= Length Standard Lengths are 1, 2, 3, 5, 10mts. Other lengths are available on request
Standard colour jacket is aqua, however other colours are available with quick turnaround
OM4 is our standard stocked item and is backward compatible to OM3 and OM2; OM1 62.5/125µm can be supplied on request

PIGTAILS

SINGLE MODE



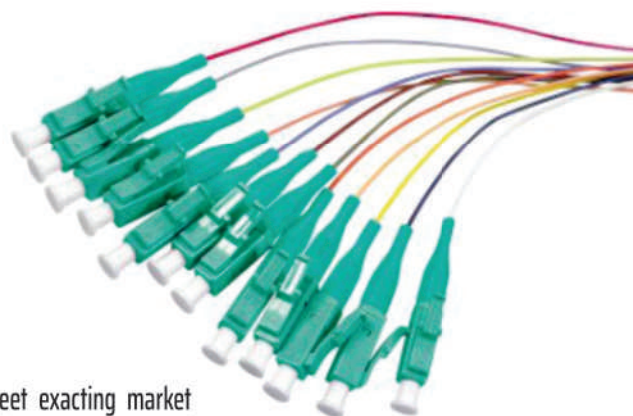
OS2 9/125µm

Stronglink Single Mode Pigtails have been designed to meet exacting market standards, 100% factory tested and supplied with test results, our pigtails meet and exceed AS/NZS3080 and ISO/IEC11801. All components used are of the highest standards to ensure suitability for even the most stringent Data Centre and telecommunication specification. Stocked in convenient 6 coloured and 12 coloured packs and made with 2mt long 900µm fibre, fitted with blue connectors for UPC, and green connectors for APC applications.

PART NUMBER	DESCRIPTION	POLISH	UNIT	PACKAGING	COLOUR
STKFLCOS2PIGxx2	LC Singlemode OS2 Pigtail Pack 2mtr	PC	Pack	Hang Sell	Blue
STKFSCOS2PIGxx2	SC Singlemode OS2 Pigtail Pack 2mtr	PC	Pack	Hang Sell	Blue
STKFSTOS2PIGxx2	ST Singlemode OS2 Pigtail Pack 2mtr	PC	Pack	Hang Sell	Blue
STKFLCAOS2PIGxx2	LCA APC S/M OS2 Pigtail Pack 2mtr	APC	Pack	Hang Sell	Green
STKFSCAOS2PIGxx2	SCA APC S/M OS2 Pigtail Pack 2mtr	APC	Pack	Hang Sell	Green

xx = 06 for six coloured pack or 12 for twelve coloured pack

MULTI MODE



OM4 50/125µm

Stronglink Laser Optimized Multimode Pigtails have been designed to meet exacting market standards, 100% factory tested and supplied with test results, our pigtails meet and exceed AS/NZS3080 and ISO/IEC11801. All components used are of the highest standards to ensure suitability for even the most stringent Data Centre specification. Stocked in convenient 6 coloured and 12 coloured packs and made with 2mt long 900µm fibre in OM4 50/25µm fibre with aqua connectors.

PART NUMBER	DESCRIPTION	POLISH	UNIT	PACKAGING	COLOUR
STKFLCOM4PIGxx2	LC Multimode OM4 Pigtail Pack 2mtr	PC	Pack	Hang Sell	Aqua
STKFSCOM4PIGxx2	SC Multimode OM4 Pigtail Pack 2mtr	PC	Pack	Hang Sell	Aqua
STKFSTOM4PIGxx2	ST Multimode OM4 Pigtail Pack 2mtr	PC	Pack	Hang Sell	Aqua

xx = 06 for six coloured pack or 12 for twelve coloured pack

OM4 is our standard stocked item and is backward compatible to OM3 and OM2; OM1 62.5/125µm can be supplied on request

ADAPTORS/ COUPLERS

ST SIMPLEX COUPLER



SC SIMPLEX COUPLER



SC DUPLEX COUPLER



LC DUPLEX COUPLER



LC SIMPLEX COUPLER



LC QUAD COUPLER



Stronglink Adaptors/Couplers have been designed to meet and exceed AS/NZS3080 and ISO/IEC11801. All components used are of the highest standards to ensure suitability for even the most stringent Data Centre and Telecommunication specification. All inserts are manufactured from top grade industrial ceramics to ensure correct alignment of the mating connectors for the life of the product.

SINGLE MODE

PART NUMBER	DESCRIPTION	INSERT	UNIT	PACKAGING	COLOUR
STKFLCDPXBLUE	LC Duplex Adaptor S/M Blue	Ceramic	Each	Hang Sell	Blue
STKFSCDPXBLUE	SC Duplex Adaptor S/M Blue	Ceramic	Each	Hang Sell	Blue
STKFLCADPXGREEN	LCA Duplex Adaptor S/M Green	Ceramic	Each	Hang Sell	Green
STKFSCADPXGREEN	SCA Duplex Adaptor S/M Green	Ceramic	Each	Hang Sell	Green
STKFLCQUADSBLUE	LC Quad Adaptor S/M Blue	Ceramic	Each	Hang Sell	Blue

MULTIMODE

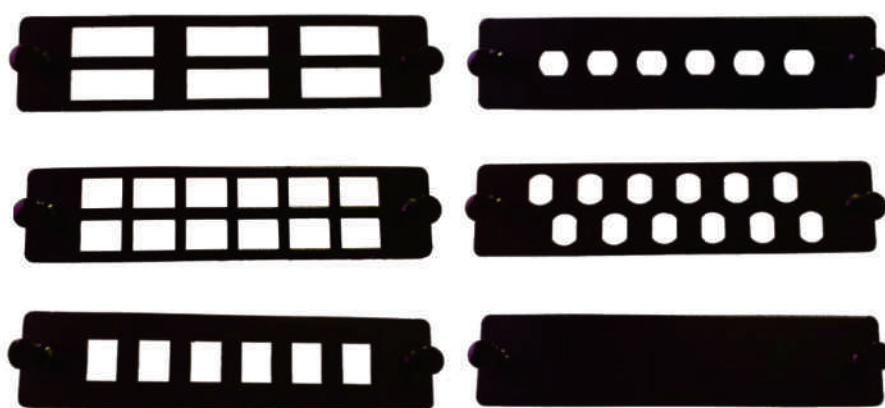
PART NUMBER	DESCRIPTION	INSERT	UNIT	PACKAGING	COLOUR
STKFLCDPXQUA	LC Duplex OM3/4 Adaptor Aqua	Ceramic	Each	Hang Sell	Aqua
STKFSCDPXAQUA	SC Duplex OM3/4 Adaptor Aqua	Ceramic	Each	Hang Sell	Aqua
STKFLCQUADAQUA	LC Quad OM3/4 Adaptor Aqua	Ceramic	Each	Hang Sell	Aqua

STKFLCDPXVIOLET	LC Duplex OM4 Adaptor Violet	Ceramic	Each	Hang Sell	Violet
STKFSCDPXVIOLET	SC Duplex OM4 Adaptor Violet	Ceramic	Each	Hang Sell	Violet
STKFLCQUADVIOLET	LC Quad OM4 Adaptor Violet	Ceramic	Each	Hang Sell	Violet

STKFLCDPXM1BEIGE	LC Duplex OM1 Adaptor Beige	Ceramic	Each	Hang Sell	Beige
STKFSCDPXM1BEIGE	SC Duplex OM1 Adaptor Beige	Ceramic	Each	Hang Sell	Beige
STKFLCQUADM1BEIGE	LC Quad OM1 Adaptor Beige	Ceramic	Each	Hang Sell	Beige

STKFSTXSSTEEL	ST Simplex Adaptor All Modes Steel	Ceramic	Each	Hang Sell	Steel
---------------	------------------------------------	---------	------	-----------	-------

FIBRE ADAPTOR PANELS AND SPLICING ACCESSORIES



FIBRE ADAPTOR PANELS

Stronglink's Fibre Adaptor Panels and Splicing Accessories are used with most of our metal FOBOT enclosures to allow the most flexible approach to installing your fibre. Plate cut outs include SC Duplex which can be used with LC Quad, SC Simplex which can be used with LC Duplex, ST Simplex for use with ST & FC connectors, and a blanking panel for use with smaller core counts.

PART NUMBER	DESCRIPTION	MATERIAL	UNIT	PACKAGING	COLOUR
STKFSCDPX6	6 Port SC Duplex LC Quad Panel	Steel	Each	Bulk	Black
FSCSPX12	12 Port SC Simplex LC Duplex Panel	Steel	Each	Bulk	Black
FSCSPX6	6 Port SC Simplex LC Duplex Panel	Steel	Each	Bulk	Black
FSTSPX6	6 port ST Simplex Panel	Steel	Each	Bulk	Black
FSTSPX12	12 port ST Simplex Panel	Steel	Each	Bulk	Black
FBLANK	Blank Panel	Steel	Each	Bulk	Black

SPLICE TRAYS

Stronglink's Splice Trays are perfect for protection and support of spliced fibre after installation of splice protectors. Both support 24 fibres and can be stacked to allow for higher core counts.



PART NUMBER	DESCRIPTION	MATERIAL	UNIT	PACKAGING	COLOUR
STKFSPLICE24	24 way Splice Tray - Stackable	Plastic	Each	Bulk	Beige
STKFSPLICE24D	24 way Splice Tray - Stackable - Deluxe	Plastic	Each	Bulk	Beige

SPLICE PROTECTORS

Stronglink's Splice Protectors, available in 40mm and 60mm are engineered to protect and support fibre after splicing.



PART NUMBER	DESCRIPTION	MATERIAL	UNIT	PACKAGING	COLOUR
STKFSPLICE40	Heatshrink Splice Protector - 40mm	Plastic	Each	Bulk	Clear
STKFSPLICE60	Heatshrink Splice Protector - 60mm	Plastic	Each	Bulk	Clear

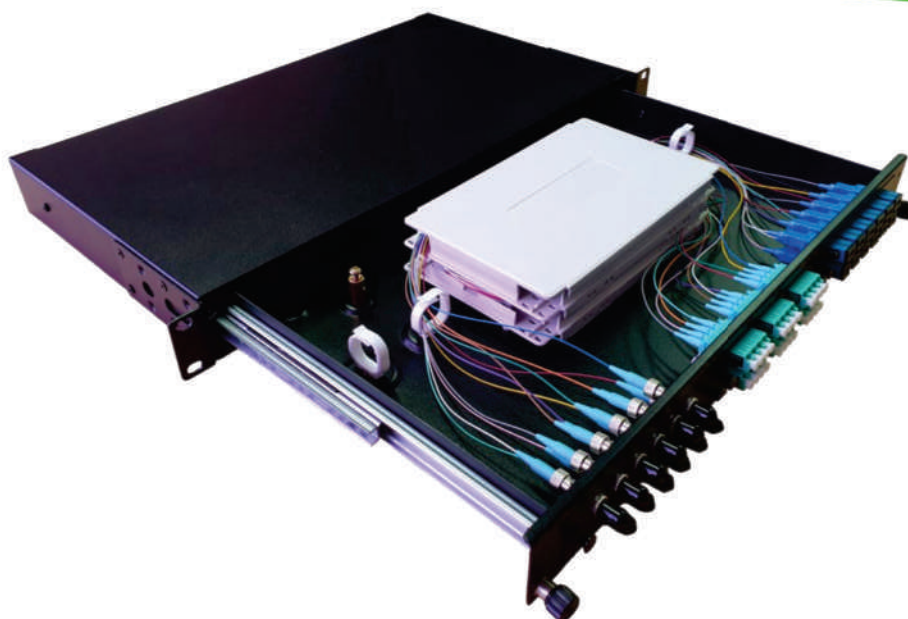
RUBBER INSERTS

Stronglink's Rubber inserts help you present a professional image when connecting a FOBOT Plate that does not have a full core count.



PART NUMBER	DESCRIPTION	MATERIAL	UNIT	PACKAGING	COLOUR
STKFRUBSCDPX	Rubber Insert for Duplex SC / Quad LC Hole	Rubber	Each	Bulk	Black
STKFRUBSCSPX	Rubber Insert for Simplex SC / Duplex LC Hole	Rubber	Each	Bulk	Black
STKFRUBST/FCSPX	Rubber Insert for Simplex ST / Simplex FC Hole	Rubber	Each	Bulk	Black

FOBOT'S SLIDING 1U



Stronglink FOBOT (Fibre Optic Break Out Tray) Kits are designed to offer installers of fibre optic cabling important features while maintaining a simple and easy to use design. Suitable for all common cable structures (Loose Tube, Indoor/Outdoor Riser, Underground etc.), the Stronglink FOBOT Kit's flexibility of the modular plate design ensures great access for users when patch in systems. Considered to be a high density design with the ability to offer up to 72 LC terminated fibres in 1U, it is an all-round cost effective solution.

PART NUMBER	DESCRIPTION	MATERIAL	UNIT	PACKAGING	COLOUR
STKFFOBOTKIT	FOBOT Kit 1U Sliding c/- Plates and Splice Tray	Steel	Each	Carton	Black
STKFFOBOTRODENTKIT	Rear Rodent Kit for FFOBOTKIT	Steel	Each	Carton	Black

REAR VIEW ANGLED STRAIN RELIEF DESIGN



REAR VIEW WITH RODENT-PROOF KIT



MODULAR 3 PLATES DESIGN



KEY FEATURES:

1U Sliding Tray with ball bearing runners.
Adjustable mounting ears
Two rear options Angled rear cable entry (Standard)
 Flat rear rodent proof cable entry (Optional)
Modular 3 front plate design
Fibre Density 72 Fibre LC
 36 Fibre SC
 36 Fibre ST
Long life steel construction
Black in colour

KIT INCLUDES:

1U Sliding break-out tray
1x 24 way splice tray
24x Splice protectors – 40mm
2x Blank Plate
2x 6 port SC Duplex / LC Quad Plate
2x 6 port SC Simplex / LC Duplex Plate
Accessory kit inc: 6x 4" Cable ties
 2x Strain relief post
 Cage nut set
 4x Cable management clips
 2x Adhesive cable guides
 1x Laser warning label

Unless otherwise stated Adaptors/Couplers, Pigtails, cords, trays and plates are sold separately.

FOBOT WALL BOXES

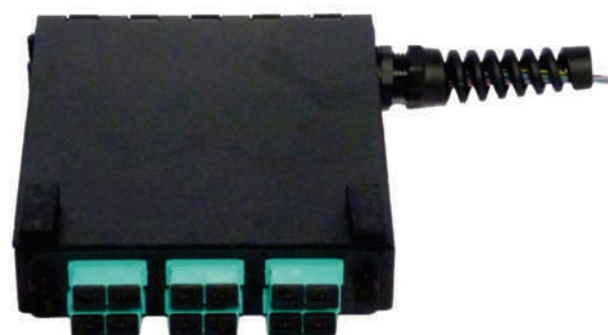
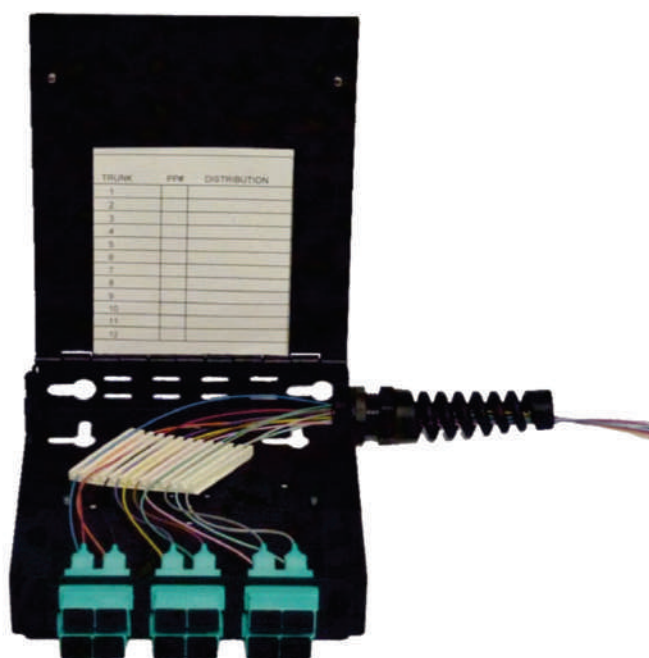


Note: Requires FOBOT plates, to suit your installation, to be ordered separately, see page 15

2 DOOR LOCKABLE WALL BOX

Stronglink's 2 Door Lockable Wall Box has been designed with a wide range of applications in mind. Using our FOBOT plates for maximum flexibility these boxes mount directly to walls. The versatile design comes with top and bottom rubber cable glands and can be fitted with MPO/MTP cassettes. Ideal for Pre-terminated fibre or splice connections. Dimensions: 300mm x 270mm x 77.5mm

PART NUMBER	DESCRIPTION	MATERIAL	UNIT	PACKAGING	COLOUR
STKFBOXWALL24	Fibre Wall Box 24 Fibre 2 door lockable	Steel	Each	Carton	Black
STKFBOXSMALL	Fibre Wall Box	Steel	Each	Carton	Black

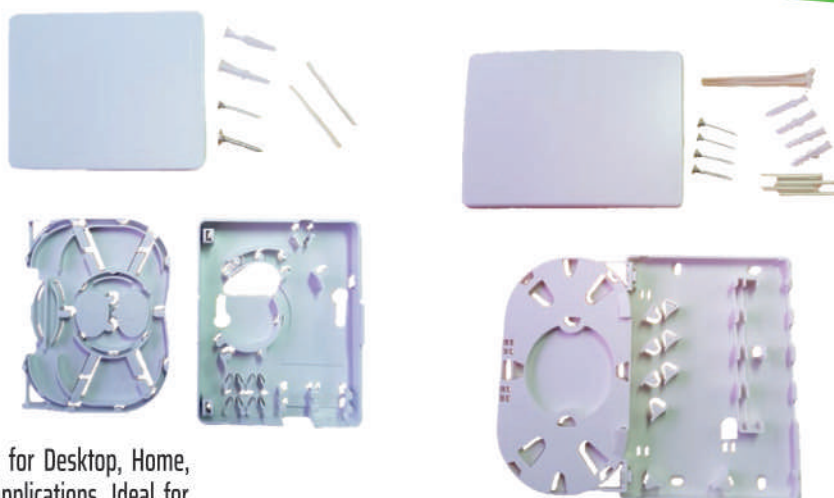


Note: Requires FOBOT plate, to suit your installation, to be ordered separately, see page 15

FIBRE WALL BOX

Stronglink's Fibre Wall Box Box has been designed with a wide range of applications in mind, particularly for small drop offs, and workgroups. Using our FOBOT plates for maximum flexibility these boxes mount directly to walls. The versatile design comes with top and bottom rubber cable glands and multiple mounting holes & keyways. Ideal for Pre-terminated fibre or splice connections. Dimensions: 160mm x 140mm x 40mm

FOBOT'S PLASTIC BOXES



INDOOR FIBRE WALL BOX

Stronglink's Indoor Plastic Fibre Wall Box is perfect for Desktop, Home, Apartment, Hotel, SoHo, GPON and FTTx end point applications. Ideal for Pre-terminated fibre or splice connections. Our Plastic wall boxes come with built in cable management and can be fitted with SC Simplex or LC Duplex Connectors. Dimensions: 150mm x 110mm x 30mm.

PART NUMBER	DESCRIPTION	MATERIAL	UNIT	IP RATING	COLOUR
STKFBOXINT2	2 Fibre Indoor Fibre Box	Steel	Each	N/A	Grey
STKFBOXINT4	4 Fibre Indoor Fibre Box	Steel	Each	N/A	Grey
STKFBOXIP55-6	6 Fibre IP55 Wall Box	Steel	Each	IP55	Grey
STKFBOXIP55-12	12 Fibre IP55 Wall Box	Steel	Each	IP55	Grey
STKFBOXIP55-24	24 Fibre IP55 Wall Box	Steel	Each	IP55	Grey

OUTDOOR FIBRE WALL BOX

Stronglink's Outdoor IP55 rated Plastic Fibre Wall Box is perfect for GPON and FTTx end point applications and are a great substitute for a metal FOBOTS in carpark, liftwell, and basements. Ideal for Pre-terminated fibre or splice connections. Our IP rated fibre boxes comes with built in cable management and can be fitted with SC Simplex or LC Duplex Connectors.

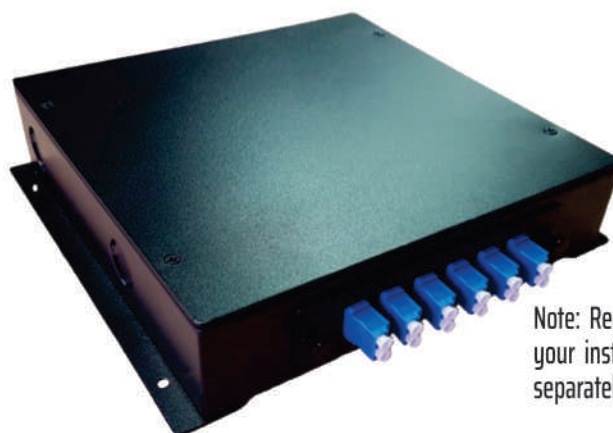
Dimensions:

- 6 Fibre 210x140x40mm
- 12 Fibre 240x300x90mm
- 24 Fibre 280x320x120mm



Unless otherwise stated Adaptors/Couplers, Pigtails, cords, trays and plates are sold separately.

FOBOT DIN BOXES



Note: Requires FOBOT plate, to suit your installation, to be ordered separately, see page 15

DIN RAIL MOUNTED

Stronglink's DIN Rail Mount FOBOT has been designed with industrial applications in mind. Using our FOBOT plates for maximum flexibility these boxes mount directly to industry standard DIN rail or can be wall mounted as required. The versatile design is rodent proof, comes with knockout holes for cable glands and can be fitted with MPO/MTP cassettes. Ideal for Pre-terminated fibre or splice connections. Dimensions: 222mm x 200mm x 47.5mm

PART NUMBER	DESCRIPTION	MATERIAL	UNIT	PACKAGING	COLOUR
STKFBOXDIN	FOBOT Din Mount	Steel	Each	Carton	Black
STKFBOXMINIDIN	FOBOT Mini Din Mount	Steel	Each	Carton	Black



MINI DIN RAIL MOUNTED

Stronglink's Mini DIN Rail Mount FOBOT has been designed with industrial applications in mind. Fitted with a 12 x SC Simplex plates these boxes mount directly to industry standard DIN rail. The versatile design is rodent proof, can be side stacked for larger installations and comes with knockout holes for cable glands and MPO/MTP connectors. Suitable for use with Pre-terminated Fibre or Splice installations. Size 155mm x 55.5mm x 110mm

TOOLS, CLEANER, TESTER & ACCESSORIES

Stronglink's innovative range of fibre optic tools, cleaners, testers and accessories are high quality, value for money and allow the fibre terminator to work with fibre in the quickest most economical method.



Stronglink's kevlar cutters and 3 hole stripper are essential items in every toolbag. Made from top quality materials, these tools are designed for a long life. The Kevlar cutters will neatly trim Aramid fibres without hassle. The 3 hole fibre stripping tool will remove the jacket, buffer & cladding down to the glass without nicks or scratches.

Stronglink's Push Clean cleaners are recommended by industry experts to be used every time before fibre leads/pigtails are inserted in adaptors or interface devices. This methodology ensures best connection & long life of your fibre network. The Push Clean can be used directly on sockets and with the use of the attached adaptor on connector plugs. Available in 2.5mm for SC/ST/FC or 1.25mm for LC/MU connections

Stronglink's 400x Microscope, supplied with adaptors for both 2.5mm (SC/ST/FC) and 1.25mm (LC/MU) connectors, is designed with an integrated laser (with safety filter) and high performance optics to allow you the clearest view of Fibre Optic Connectors to inspect for contamination, damage and scratches.

Stronglink's Visual Fault Locators are a special class of light source that emit a high intensity visible red laser into a fibre core. This light can be used to both check the continuity of a fibre and identify the fibre's far end, or it can be used to visually identify the location of a fault.

Stronglink's Fibre Optic range also includes splash bottles for isopropyl Alcohol, and Sharps Container. While being essential to good termination practice, these simple items are sometimes hard to find however Stronglink supplies a full range of accessories.

PART NUMBER	DESCRIPTION	UNIT
STKFSTRIPPER3	Fibre Stripper 3 hole	Each
STKFCUTTERSKEVLAR	Fibre Kevlar Cutters	Each
STKFPCLEAN125LCMU	Fibre Push Cleaner 1.25mm LC/MU	Each
STKFPCLN25SCSTFC	Fiber Push Cleaner 2.5mm SC/ST/FC	Each
STKFBVFL	Visual Fault Locator 2.5mm inc1.25 adptor (5km)	Each
STKFMS400	Fibre Inspection Microscope 400x	Each
STKFDISPOSAL	Fibre Disposal Unit - for sharps	Each
STKFISOBOTTLE	Fibre Isopropyl bottle	Each

FUSION SPLICER & CLEAVER



FUSION SPLICER

Stronglink's FFUSIONSPLICER1 uses six motors and the latest core alignment technology with auto focus in the new generation of its fibre optic fusion splicer. Our Quad Core industrial CPU offers fast response times and mated with our High Resolution 800x480 5" screen's 300 times focus magnification makes this fusion splicer a technology leader. Ideal for splicing single mode and multimode fibres it has been tested in environments for data communications, telecommunication, FTTx, GPON, Security networking for trunks over 100 kilometres.

KEY FEATURES:

- 7800mAh Lithium Long Life Battery
- Dustproof / Shatterproof / Shockproof
- Complete Tool Kit
- 6 Second Splice
- 15 Second Heat Shrink
- Core Alignment for best results
- App Based Configuration
- Lite Weight 2kgs
- 122 x 130 x 148mm
- Built- in light
- Quad Core Industrial Processor

INCLUDED IN KIT:

- Carrying Case
- Simple Fibre Cleaver
- Spare Electrodes
- Jacket Strippers
- Miller Strippers
- Hex Keys
- Fibre for ARC Calibration
- Carrying Strap
- Power Adaptor
- Alcohol Bottle
- Brush
- User Manual



MECHANICAL CLEAVER

Stronglink's FCLVMECH Mechanical Cleaver with Sharps bin is a premium cleaver with a simple "One Step" operation. Light weight (420g) and compact design (95 x 90 x 65mm) makes it perfect for the installers' tool kit. The blade has a life of 54,000 cleaves, and is design to work with a bare fibre diameter of 125micron, and coating diameters of 250micron (cleave length 9 to 16mm) and 900micron (cleave length 10 to 16mm).

PART NUMBER	DESCRIPTION	UNIT	PACKAGING
STKFCLVMECH	Mechanical Cleaver + Sharps Bin	Each	Carton
STKFFUSIONSPLICER1	Fibre Optic Fusion Splicer	Each	Carton

FOBOT

DOME CLOSURE



Stronglink's Dome Closures are designed to be the perfect re-enterable jointing enclosure for Aerial/pole, Wall Mount & Underground Fibre OpticSplicing applications. The enclosure has been made from high quality Poly-Carbonate Plastic & features a easy to use clamp with a Silicon Rubber seal for re-entry. The kit also includes all accessories needed during termination including Sealant Lined Heat-Shrink Tubing.

PART NUMBER	DESCRIPTION	MATERIAL	UNIT	IP RATING	COLOUR
STKFDOME24	Dome Closures 24 Fibers	Poly Carbon	Each	IP67	Black
STKFDOME48	Dome Closures 48 Fibers	Poly Carbon	Each	IP67	Black
STKFDOME96	Dome Closures 96 Fibers	Poly Carbon	Each	IP67	Black



KITS INCLUDE:

- Splice Tray
- Splice Protectors
- Nylon cable ties
- Hanging Hook
- Branch Block
- Marking Stickers

PART NUMBER	STKFDOME24	STKFDOME48	STKFDOME96
Dimensions (mm)	100 x 340	210x440	210x440
Weight (kg)	1.5	4	4
Cable Diameter (mm)	7 to 18	7 to 22	7 to 22
Entry Ports	2 in / 3 out	6	6
Number of Trays	2	2	4
Max Number of cores per tray	12	24	24
Max Capacity	24	48	96

FIBRE OPTIC CABLE

Stronglink are committed to supporting the local market and now stock a limited range of fibre optic cable.

INDOOR/OUTDOOR RISER CABLE

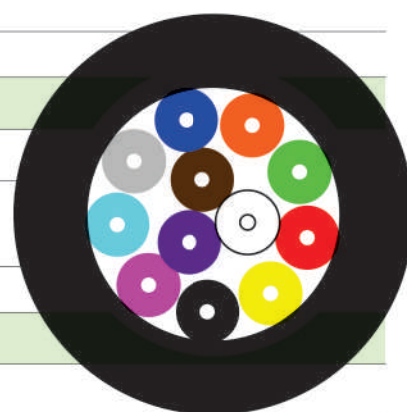
Stronglink light duty riser optical cable meets all relevant standards including AS/NZS3080, ACMA AS/CAS008, IEC60332.1 & IEC60332-3-24. This tight buffered multi-fibre optical cable is suitable for applications in local area network (LAN) including FDDI cabling, Ethernet and Token ring.

SINGLE MODE

PART NUMBER	DESCRIPTION
STK6CSMINDOUT	6 Fibre OS2 Indoor/Outdoor light duty riser optical cable
STK12CSMINDOUT	12 Fibre OS2 Indoor/Outdoor light duty riser optical cable

MULTI MODE

PART NUMBER	DESCRIPTION
STK6COM4INDOUT	6 Fibre OM4 Indoor/Outdoor light duty riser optical cable
STK12CMMINDOUT	12 Fibre OM4 Indoor/Outdoor light duty riser optical cable



LOOSE TUBE CABLE

Stronglink loose tube optical cable meets all relevant standards including AS/NZS3080, ACMA AS/CAS008. This loose Tube Dielectric optical cable is designed for external underground installations in ducts or direct burial in open-cut trenches. Polyimide provides anti-termite protection.

SINGLE MODE

PART NUMBER	DESCRIPTION
STK6SMLTUBE	6 Fibre OS2 external underground loose tube optical cable
STK12CSMLTUBE	12 Fibre OS2 external underground loose tube optical cable

MULTI MODE

PART NUMBER	DESCRIPTION
STK6CMMLTUBE	6 Fibre OM4 underground loose tube optical cable
STK12CMMLTUBE	12 Fibre OM4 underground loose tube optical cable



OM4 is our standard stocked item and is backward compatible to OM3 and OM2

PRE-TERMS

Save time and
money with a
Pre-term from
Stronglink !



**GENERAL TRADE
SUPPLIES**

Exclusive Distributors
for all Stronglink Products

DO YOU NEED TO OFFER YOUR CUSTOMER A WARRANTY ON THEIR DATA CABLING?

ASK OUR TEAM ABOUT BECOMING
A STRONGLINK CERTIFIED INSTALLER.



Electrical Best Pty Ltd, ACN 631 960 711 , Trading as General Trade Supplies

General Trade Supplies

36 Terrence Road Brendale Qld 4500

Ph : + 61 7 3881 6115 FAX : + 61 7 3881 6120

stronglink.com.au